

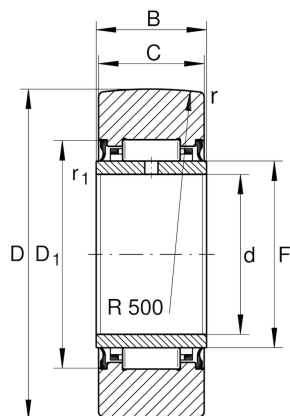
NA2210-2RSR

Yoke type track roller

Schaeffler ID:
0000277900000

Yoke type track rollers NA22...-2RSR,
without axial guidance, lip seals on both
sides

Technical information



Main Dimensions & Performance Data

D	90 mm	Outside diameter
F	58 mm	Raceway diameter inner ring
C	22.7 mm	Width, outer ring
$C_{r w}$	26,000 N	Basic dynamic load rating, radial
$C_{0r w}$	44,000 N	Basic static load rating, radial
$C_{ur w}$	5,700 N	Fatigue load limit, radial
n_{DG}	650 1/min	Speed on permanent grease lubrication
	0.691 kg	Weight

Dimensions

d	50 mm	Bore diameter
B	23 mm	Width, inner ring
$D_{1 \min}$	68 mm	Minimum mounting dimension
r_{\min}	1.1 mm	Minimum chamfer dimension
$r_{1 \min}$	0.6 mm	Minimum chamfer dimension
R	500 mm	Radius of outer ring outside profile